



'PAIGE' HEBE PINGUIFOLIA
 Ultimate Height: 0.1-0.5m
 Ultimate Spread: 0.5-1.0m
 Time to ultimate spread: 5-10 years

PA ID - REFER TO LOCATION ON PLAN



HIDCOTE' LAVANDULA ANGUSTIFOLIA
 Ultimate Height: 0.5m
 Ultimate Spread: 1.0m
 Time to ultimate spread: 5 years

HI ID - REFER TO LOCATION ON PLAN



'OTTO LUYKEN' PRUNUS LAUROCERASUS
 Ultimate Height: 0.5-1.0m
 Ultimate Spread: 1.0-1.5m
 Time to Ultimate spread: 10-20 years

OT ID - REFER TO LOCATION ON PLAN



CHOISYA TERNATA
 Ultimate Height: 1.5m
 Ultimate Spread: 1.5-2.5m
 Time to Ultimate spread: 10-20 years

CH ID - REFER TO LOCATION ON PLAN



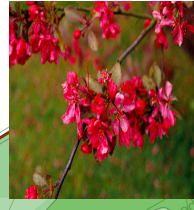
TAXUS BACCATA (YEW)
 Ultimate Height: 12m
 Ultimate Spread: 8m
 Time to Ultimate spread: 20-50yrs

TB ID - REFER TO LOCATION ON PLAN



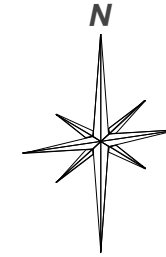
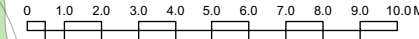
MALUS SYLVESTRIS (CRAB APPLE)
 Ultimate Height: 8-12m
 Ultimate Spread: 4-8m
 Time to Ultimate spread: 20-50yrs

MS ID - REFER TO LOCATION ON PLAN



Malus x moerlandsii 'Profusion (CRAB APPLE)
 Ultimate Height: 8-12m
 Ultimate Spread: Wider than 8 meters
 Time to Ultimate spread: 20-50yrs

MP ID - REFER TO LOCATION ON PLAN



PERIMETER PLANTING BEDS WITH TRELLIS IN FRONT OF CLOSE BOARDED FENCING (1.8M HEIGHT) TO THE REAR GARDEN



CLOSE BOARDED FENCING (1.8M HEIGHT) TO THE REAR GARDEN



YORKSTONE PAVING TO REAR TERRACES AND FRON PATHWAYS



EXAMPLE OF PROPOSED PERMEABLE RESIN BONDED GRAVEL TO FRONT DRIVEWAYS

NOTES:

UNUSUAL RISKS IDENTIFIED IN CDM RISK ASSESSMENT:

REV	DATE	REVISION	BY
D	12/11/20	UPDATED LANDSCAPING TO EAST BOUNDARY	RF
C	05/11/20	REVISED LOCATION OF PLANT ROOMS	RF
B	28/10/20	UPDATED LANDSCAPING TO FRONT BOUNDARY	RF
A	08/06/20	UPDATED LAYOUT FOLLOWING FIRE APP.	RF

JOB: 5 Parkside Avenue SW19

DWG: Proposed External landscaping plan
 JOB NO: 633
 DWG. NO: EW01
 REVISION: D
 SCALE: 1:100 @ A1
 DATE: 11/08/2020
 DRAWN BY: RF
 CHECKED BY: HH

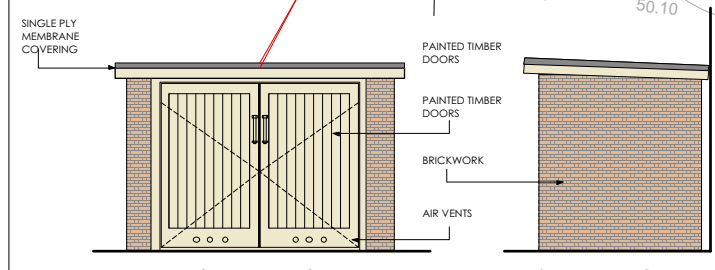
DWG. STATUS: PLANNING

Do not scale this drawing
 All dimensions to be checked on site
 Holden Harper copyright reserved

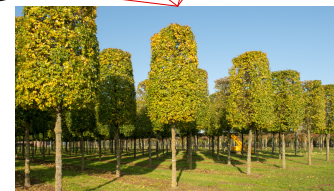
HOLDEN HARPER
 Architects | Engineers

26 High Street, Wimbledon
 London, SW19 5BY
 Telephone: 020 8946 5502
 Email: arch@holdenharper.co.uk

Page 70



EXAMPLE OF PROPOSED FRONT BOUNDARY WALL WITH METAL RAILINGS - NATURAL SCREENING BEHIND



AC PROPOSED ACER CAMPESTRE ELSRIJK TO BE SPACED EQUALLY BEHIND FRONT WALL



This page is intentionally left blank